

£550,000

Paddock Close, Mansfield,



Welcome to **BuckleyBrown**, where every home is carefully presented, so you can explore with clarity and confidence.

**BuckleyBrown**  
ESTATE AGENTS

GUIDE PRICE £550,000-£575,000

"It's not often a six-bedroom detached home comes along that truly delivers on every front—location, space and style—but this one does just that. With the highly regarded catchment schools just a short walk away, it's an ideal setting for a growing family."

Jon, Valuer



## AN ALL-ROUND CONTEMPORARY FAMILY HOME

*A strikingly modern and characterful contemporary home, thoughtfully designed to suit the demands of today's family living.*

A strikingly modern and characterful contemporary home, thoughtfully designed to suit the demands of today's family living. This impressive property offers six spacious bedrooms and a well-balanced layout that prioritises both comfort and functionality, making it ideal for growing families or those needing flexible living space.

The interiors are finished to a high standard throughout, with a focus on clean architectural lines, quality materials, and a refined, understated aesthetic. Generous proportions and large openings create a light-filled environment, enhancing the sense of space and flow between rooms. Every detail has been considered to deliver a home that feels both stylish and practical, combining modern design with everyday usability in a seamless way.



## THE FINER DETAILS

*A substantial six-bedroom detached property situated in Mansfield, offering an impressive amount of space and versatility, ideal for modern family living.*

This well-presented home combines generous proportions with a practical layout, making it suitable for larger families or those requiring flexible accommodation for home working and entertaining.

The ground floor begins with a welcoming porch leading into a central hallway that sets the tone for the rest of the home. From here, there is access to a spacious living room and a separate dining room, providing excellent areas for both relaxation and formal dining. The property also benefits from a dedicated office, perfect for remote working or study. At the heart of the home is a well-appointed kitchen/dining room, designed for everyday family life and social gatherings, complemented by a separate utility room and a convenient WC.

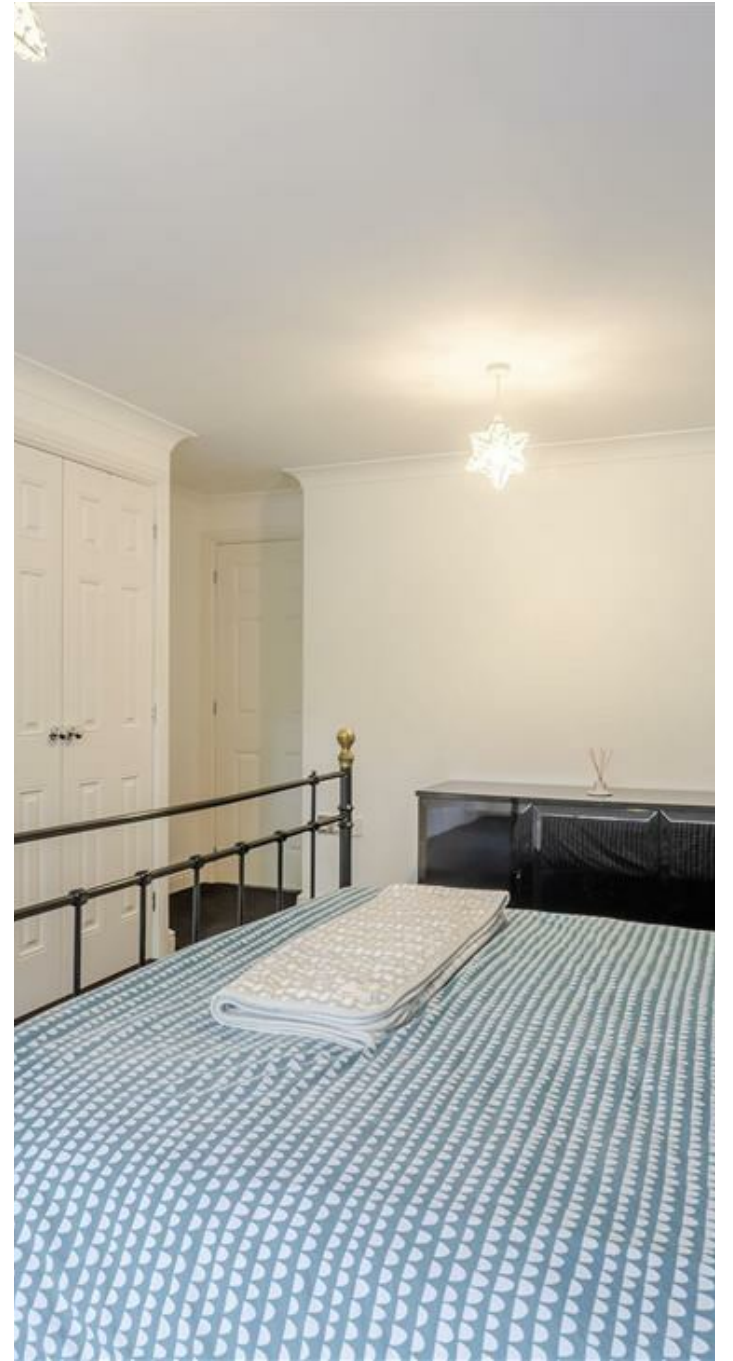
To the first floor, the property offers six well-proportioned bedrooms in total. The principal bedroom and a second bedroom both benefit from en-suite shower rooms, adding a touch of luxury and convenience. The remaining bedrooms are served by a modern family bathroom, all arranged off a spacious landing that enhances the sense of light and openness throughout the upper floor.

Externally, the property is equally impressive, with a large driveway providing ample off-road parking and access to a garage at the front. To the rear, there is a generous garden featuring a large lawn and a paved patio area, creating an ideal space for outdoor





**BuckleyBrown**  
ESTATE AGENTS







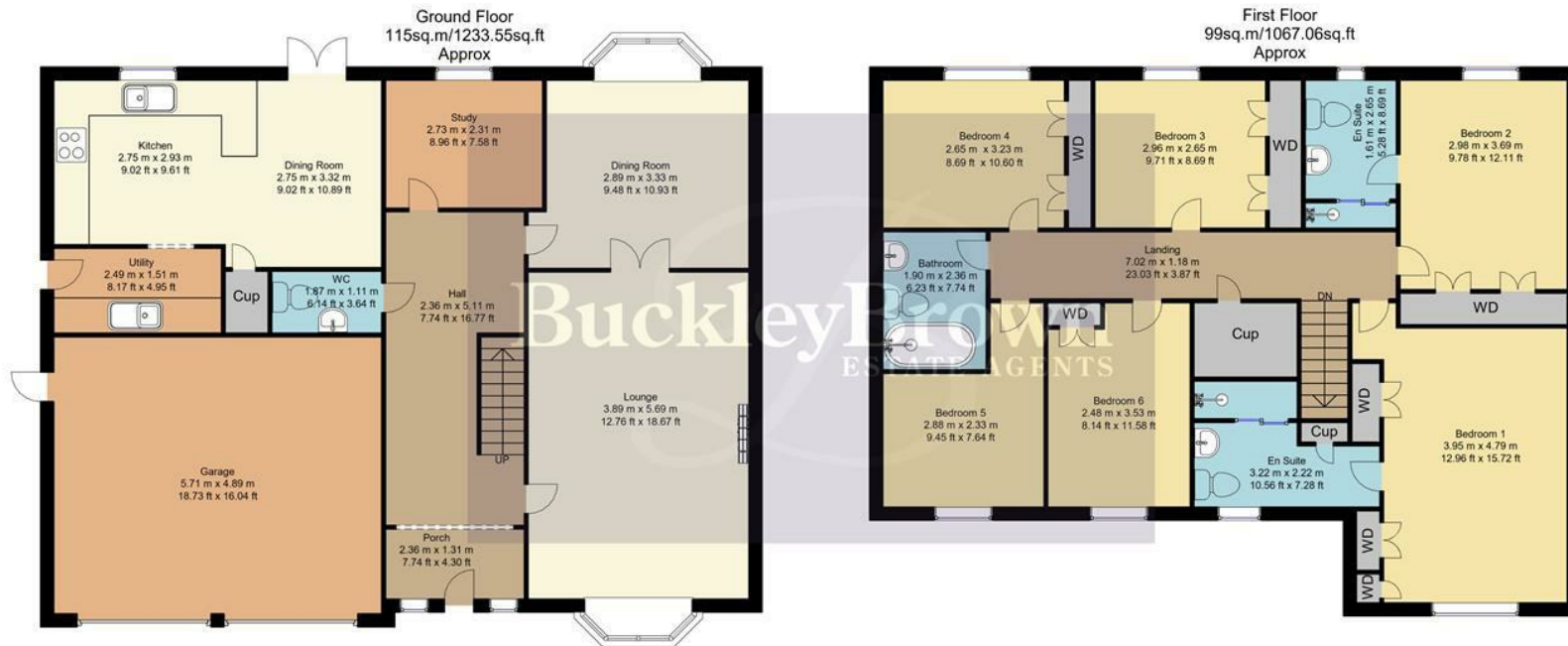
## LIFE IN MANSFIELD

***Living in Mansfield offers a well-balanced lifestyle, combining the convenience of a thriving town with easy access to surrounding countryside.***

The area is known for its strong community feel, good range of local amenities, and excellent transport links, making it popular with families, professionals, and commuters alike. Mansfield provides a variety of shopping options, schools, leisure facilities, and parks, ensuring day-to-day needs are well catered for while still maintaining a relaxed, approachable atmosphere.

The town is also ideally positioned for those who enjoy the outdoors, with Sherwood Forest and a number of green spaces nearby offering opportunities for walking, cycling, and weekend leisure. With its blend of history, modern development, and ongoing regeneration, Mansfield continues to grow in appeal as a place that offers both practicality and quality of life.





Whilst every attempt has been made to ensure the accuracy of the floor plan contained here, no responsibility is taken for incorrect measurements of doors, windows, appliances and room or any error, omission or misstatement. Exterior and interior walls are drawn to scale based on interior measurements. Any figure given is for initial guidance only and should not be relied on as basis of valuation. These plans are for marketing purposes only and should be used as such by any prospective purchase. Specially no guarantee is should not be relied on as a basis of valuation. These plans are for marketing purposes only and should be used as such by any prospective purchase. Specifically no guarantee is given on the total square footage of the property if quoted on this plan.

CC Ltd ©2018

## Key Features

**Substantial six-bedroom detached family home in Mansfield**

---

Spacious and versatile layout ideal for modern family living

---

Welcoming porch leading into central entrance hallway

---

Well-suited for families seeking space, flexibility, and comfort

---

Dedicated office space, ideal for home working or study

---

Large kitchen/dining room forming the heart of the home

---

Separate utility room and convenient ground floor WC

---

Two bedrooms benefiting from en-suite shower rooms

---

Modern family bathroom serving remaining bedrooms

---

Ample off-road parking via large front driveway, a double garage & 2 EV charging points

---

**BuckleyBrown**  
ESTATE AGENTS



These particulars are intended as a guide only and do not form part of any offer or contract. All descriptions, measurements, images and plans are provided for illustration purposes and should not be relied upon as statements of fact. Prospective purchasers should satisfy themselves as to the accuracy of the information. Buckley Brown Estate Agents accept no liability for any loss arising from reliance on these details.

© Buckley Brown Estate Agents 2026. All rights reserved.

Exceptional homes deserve  
exceptional representation.

Let's Chat.

01623 633633

[mansfield@buckleybrown.co.uk](mailto:mansfield@buckleybrown.co.uk)

[buckleybrown.co.uk](https://www.buckleybrown.co.uk)

**BuckleyBrown**  
ESTATE AGENTS